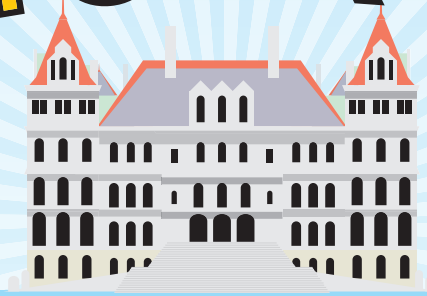


NEW YORK STATE



FROM STATE SENATOR VELMANETTE MONTGOMERY

Brooklyn Office: 30 Third Avenue, Room 1100, 11th Fl., Brooklyn, NY 11217 / (718) 643-6140

Albany Office: 711 Legislative Office Building, Albany, NY 12247 / (518) 455-3451

e-mail: montgome@senate.state.ny.us / **website:** montgomery.nysenate.gov

THE NEW YORK STATE SEAL

The first seal of the State of New York was created in 1777. It took the place of the Crown Seal, which was used when New York was a colony. The state seal that is used today was commissioned in 1882. It was the fifth time the seal was changed. The seal appears on the state flag, on printed material authorized by the state and in state buildings and offices. The state seal is kept in the custody of the Secretary of State.

WHAT THE SEAL MEANS

Eagle — The American eagle is a symbol of strength, independence and freedom. The eagle is also one of our national symbols.

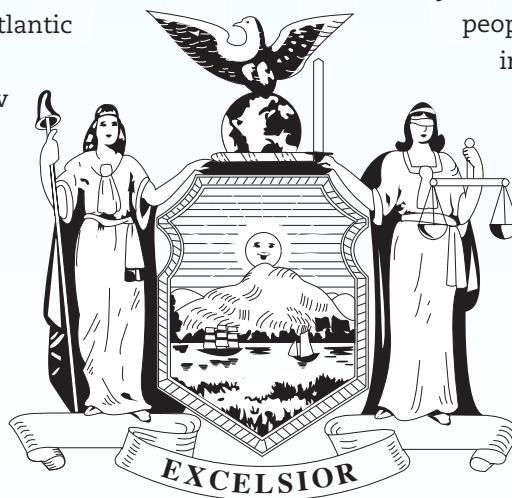
Globe — The globe points to the Atlantic Ocean and North America, showing New York's place in the world.

Sun — The sun, with a smiling face, is seen rising over the three mountain ranges.

Mountains — The three mountain ranges of New York State are shown. They are the Catskill, the Adirondack and the Allegheny mountains.

Boats — A ship and a sloop are shown about to pass each other.

River — The river represents New York's great waterways and shows how commerce began in the state.



GOVERNMENT

A number of presidents have been closely associated with the history of New York State, including **Martin Van Buren, Millard Fillmore, Chester Arthur, Grover Cleveland, Theodore Roosevelt and Franklin D. Roosevelt.**

Elected officers of the state government, chosen for four-year terms, include; Governor, Lieutenant Governor, Attorney General and Comptroller. Legislative power of the state is vested in two houses: the Senate, consisting of 62 members, and the Assembly, consisting of 150 members.

Lady Liberty — Lady Liberty, on the left, was used on the state seal almost 100 years before the Statue of Liberty was built. She represents freedom for the people of New York. Held high on a staff in her right hand is a peasant cap, representing democratic rule by the people. Her left foot is stepping on a crown, representing the rejection of royalty.

Lady Justice — Lady Justice, on the right, is blindfolded to make sure that she does not discriminate against anyone. The scales of justice in her left hand are balanced to give equal weight to both sides of all issues. The sword in her right hand represents the swift and powerful enforcement of the law.

Excelsior — The motto, meaning, "ever upward," is on a ribbon below the state seal.

FUN FACTS

- You have to be **18 years old** to vote.
- **One vote** can decide who wins an election.
- According to the 2000 census **18,976,457 people** live in New York—that ranks New York state 3rd in the United States.
- The state capital is located in **Albany**.
- There are **62 counties** in New York State.
- New York City is the **largest city** in New York State.
- New York is **47,224 square miles**.

NEW YORK STATE HISTORY: DID YOU KNOW THAT...

- From 1624 up until 1664 New York was known as the colony of **New Netherland**, a name given to it by its original Dutch settlers.
- In 1664, New Netherland was conquered by the English, and named New York in honor of the **Duke of York**.
- In 1776, New York declared its independence from England and became one of the **original 13 states** of the Federal Union.
- In April of 1777, New York's first Constitution was adopted. The first governor of New York State, **George Clinton**, was inaugurated that July.
- Our first president, George Washington, was inaugurated in 1789 in New York City, which was the **first capital** of the new nation. (It is said that George Washington also gave New York its "**Empire State**" nickname during a visit in 1784.)
- In 1848, the first **Women's Rights Convention** was held in Seneca Falls, New York.

- **Mount Marcy** is 5,344 feet high
- The **Hudson River** is 300 miles long.
- New York's highest waterfall is **Taughannock**. It is 215 feet high.
- There are **4,000 lakes and ponds** in New York. The Barge Canal System is **800 miles long**, including lakes and rivers.
- The **Governor Thomas E. Dewey Thruway** is 559 miles long, making it the longest toll expressway in the world.

- In 1884, as a gesture of friendship, France presented the **Statue of Liberty** to the people of the United States. This beacon of freedom has stood in New York Harbor since 1886.
- In 1892, **Ellis Island** opened in New York Harbor, and served until 1954 as our nation's primary gateway to liberty and opportunity for immigrants seeking a better life in the United States. It is said that 40 percent of our nation's population is descended from the 12 million immigrants who landed there.
- In 1917, the New York State Legislature passed an amendment to the State Constitution providing women the **right to vote**. Nationally, women's suffrage was not approved until 1920, when the 19th Amendment to the United States Constitution was ratified.
- In 1978, **Olga A. Méndez** was elected Senator to the New York State Legislature, thus becoming the first Puerto Rican woman to become a New York State Senator. She represented the 28th Senate District and held the position for 26 years.

NEW YORK...BY THE NUMBERS

Test your numeric knowledge of New York State (say that ten times fast!) and its government by matching the questions below with the correct answers on the right.

- a) How many State Senators are there in the New York State Legislature?
- b) How many Assemblymembers are there in the New York State Legislature?
- c) How many counties are there in New York State?
- d) How old do you need to be to vote in New York State?
- e) How many votes does it take to win an election in New York State?
- f) According to the 2000 census, there are almost ___ million people living in New York State.
- g) What year did Albany become the State Capital of New York?
- h) When did the City of Kingston in Ulster County become the first capital of New York State?
- i) How many United States Senators represent the people of New York State in the United States Congress in Washington, D.C.?
- j) How many "senators" represent you? (Careful...trick question!)

- 1777
- 62
- 150
- 3
- 1797
- 19
- 18
- 2
- 62
- 1

UNSCRAMBLE NEW YORK

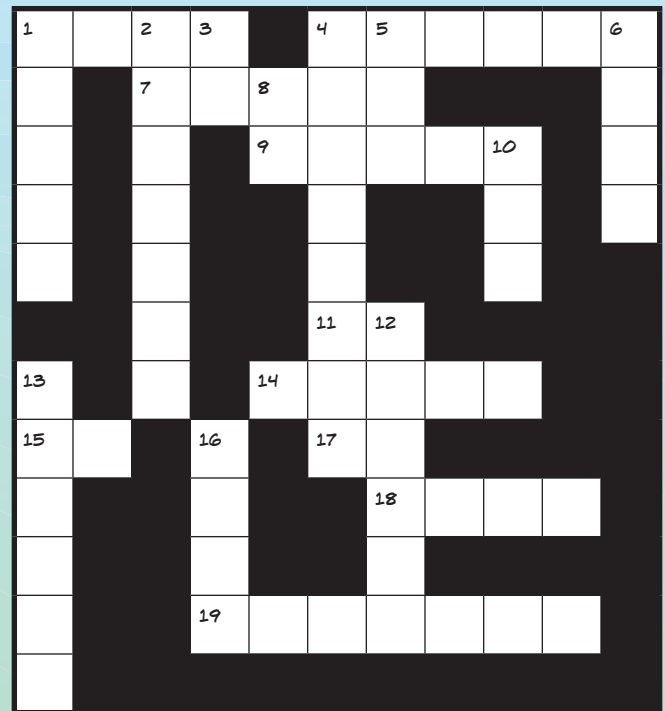
Find and circle the words listed below that refer to New York State and its government. Words can go forwards, backwards, across, up, down, and diagonally! (Hint: the definitions that follow the words might help you with puzzles elsewhere in this brochure!)

LEGISLATURE	the Senate and Assembly together
GOVERNOR	the State's Chief Executive
EMPIRE STATE	New York's nickname
VOTE	To say "yes" or "no" to a piece of legislation
VETO	When the Governor says "no" to legislation passed by the Senate and Assembly
LEGISLATION	A proposal to make a new law
BILL	Another word for a piece of legislation
CAPITOL	the building in Albany where the Legislature meets to vote on new laws
SENATOR	A member of the Senate, like me!
ASSEMBLY	One of the two houses of the State Legislature; the other is the Senate
EXCELSIOR	New York State's motto means "Ever Upward"
MUFFIN	Thanks to a group of third-graders from upstate New York, our State has an official muffin. The apple muffin, to be exact!
COMMITTEE	A group of senators or assemblymembers who meet to discuss bills having to do with education, the environment, or other specific issues
ROSE	New York's official flower
LADYBUG	New York's official insect
LAW	A bill that has been approved by the Senate, the Assembly and the Governor

L	L	I	B	Q	R	O	T	A	N	E	S
E	E	Z	A	L	A	B	Y	N	R	T	E
G	B	G	O	V	E	R	N	O	R	A	E
I	R	O	I	S	L	E	C	X	E	T	T
S	Y	P	R	S	B	D	A	I	O	S	T
L	L	L	U	A	L	E	W	N	B	E	I
A	B	O	C	D	S	A	I	E	F	R	M
T	M	T	T	O	L	F	T	G	H	I	M
I	E	I	R	E	F	O	J	U	K	P	O
O	S	P	L	U	V	M	N	O	R	S	C
N	S	A	M	P	Q	R	S	T	E	E	U
V	A	C	W	X	L	A	D	Y	B	U	G

NEW YORK'S "OFFICIAL" CROSSWORD PUZZLE

In this puzzle, almost all of the words refer to something "official" in New York State. Give it a try!



ACROSS

- New York's official State beverage _____ could say you're on _____
- The official State bird _____
- The abbreviation for "electroencephalogram," a medical test that measures the activity of your brain. (And I know that yours is working over-time right now to solve this puzzle!) _____
- The official State fish _____
- The State's motto means "ever __ ward" _____
- Your dentist may be a doctor of dental surgery, or in short, a D__ _____
- "I Love New York" is our State's _____
- The sea _____ is New York's #1 shell _____

DOWN

- "Excelsior" is the State _____
- New York's official insect _____
- When you have "kitchen patrol," and it's your turn to wash the dishes, you _____

* Answers to the puzzles can be found on the back!

STATE MOTTO

Excelsior (Ever Upward). In 1784, during a tour of the state's harbors, waterways and fertile interior, George Washington referred to New York as the "Seat of Empire." Since then, New Yorkers have worked ambitiously to live up to the state's motto and to make "The Empire State" the national leader it is today.

STATE FOSSIL

During the Silurian Age (over 400 million years ago), **Eurypterus Remipes**, an extinct relative of the modern king crab and sea scorpion, crawled along the bottom of the shallow, brackish sea that extended from Buffalo to Schenectady and south to Poughkeepsie, roughly along the route of the New York State Thruway.

STATE FRUIT

Apples were introduced in the 1600s by European settlers who brought seeds to New York. Dried apples were a staple for colonists, and hard apple cider was a popular drink.

STATE TREE

The **sugar maple** yields a sweet sap for syrup and sugar in the spring; its heavy crown of leaves turns brilliant colors in autumn. The wood makes fine furniture and burns well in woodstoves and fireplaces.

STATE FLOWER

The **rose**, wild or cultivated, in all its variety and color, was made the state flower in 1955. Ever popular, it was at the top of a school children's poll of favorite flowers in 1891.

STATE SHELL

The **Bay Scallop** is our state shell and comes in a variety of colors with about 17 to 20 ribs. The Bay Scallop lives in shallow waters, usually where eel grass is present, and can live up to 20 months.

STATE MUFFIN

The **apple muffin** was created for the Bear Road Elementary School children in North Syracuse, who were instrumental in making it the official state muffin.

STATE BIRD

The once-prolific, **red-breasted bluebird** has been making a comeback from low numbers in the 1950s. Many people provide special nesting boxes along fence rows for bluebirds.

STATE FISH

Found in hundreds of lakes and ponds in the Adirondack Mountains and scattered in cool, clear streams throughout the state, native **brook trout**, called brookies or speckles, provide fine angling and the best of eating.

STATE ANIMAL

To provide beaver pelts to European markets, fur traders settled in the early 1600s near the present capital at Albany to trade with Indians. Adult **beavers** are three to four feet long and weigh 40 to 50 pounds.

STATE GEM

The wine-red **garnet**, which is an eye appealing gem as well as a prized industrial abrasive, is the state gem.

STATE BEVERAGE

Milk contains vital nutrients that keep us healthy, and it is an important element for helping to develop strong bones and teeth. There are also many products that we all enjoy derived from milk, including ice cream, butter, yogurt and cheese.

STATE FLAG

The device of arms of the state flag was adopted in 1778, and the present flag is a modern version of a Revolutionary War flag. It is dark blue with the State Coat of Arms in the center. The Coat of Arms shows Liberty and Justice standing on either side of a shield upon which is emblazoned the sun rising behind a range of mountains. A three-masted, square-rigged ship and a Hudson River sloop signify commerce. Beneath the shield is the state motto. The original flag is at the Albany Institute of History and Art.

STATE SONG

"I Love New York"

Words and music by Steve Karmen

"I love New York. (repeat three times)

There isn't another like it.

No matter where you go.

And nobody can compare it.

It's win and place and show.

New York is special.

New York is diff'rent 'cause there's no place else

on earth quite like New York and that's why

I love New York. (repeat three times)"

ANSWERS TO THE PUZZLES

For more fun facts about New York State, visit the "Kid's Room" at the New York Department of State website at: http://www.dos.state.ny.us/kids_room

- a) There are 62 State Senators.
 b) There are 150 Assembly members.
 c) There are 62 counties, including the five that make up New York City.
 d) You must be 18 to vote.
 e) Just one...and someday the one vote that decides an election could be YOURS!
 f) There were almost 19 million...or 18,976,457 people, to be exact.
 g) 1797.
 h) 1777.
 i) New York has two United States Senators.
 j) Three! Two United States Senators and me, your State Senator!

