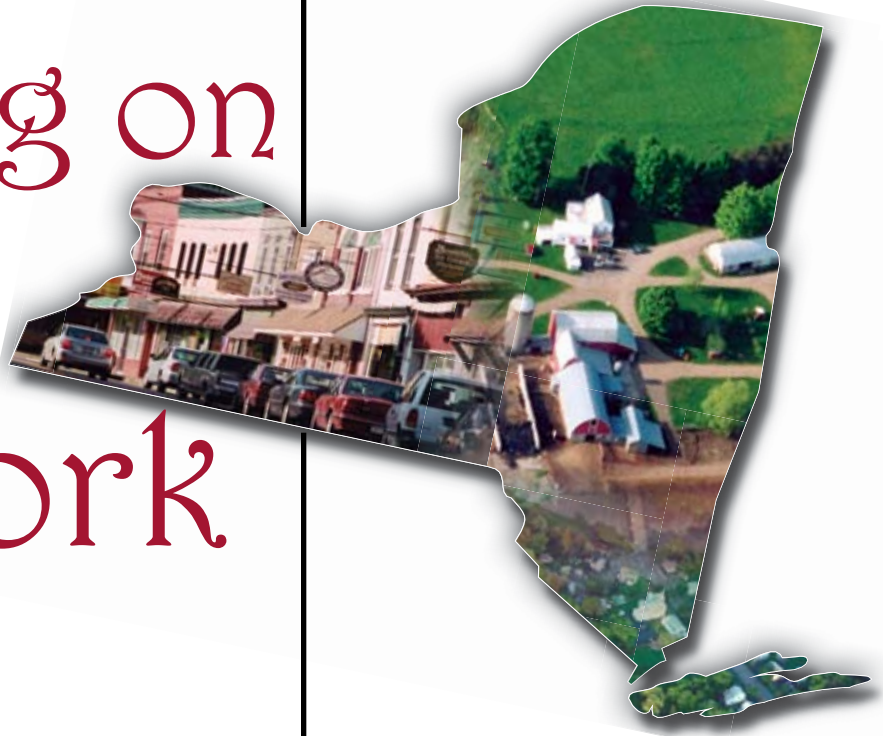


Focusing on Rural New York



Rural is neither a matter of geography, nor size, nor economy, nor anything measurable — it is a matter of what's in the heart.

— A. Claude Hopper, Ph.D.

Inside:

Commission Background
Commission Legislative Chapters
Commission Publications

NYS Legislative Commission on Rural Resources

Senate Members:

George H. Winner, Jr., Chairman
Mary Lou Rath
William T. Stachowski
David J. Valesky

Senate Mailing Address:
Legislative Office Building
Albany, NY 12247
Telephone: 518.455.2544
Fax: 518.426.6960

E-mail: ruralres@senate.state.ny.us

Assembly Members:

David Koon, Vice-Chairman
Barbara S. Lifton
James Bacalles
Daniel J. Burling

Assembly Mailing Address:
Agency Building #4
12th Floor
Albany, NY 12248
Telephone: 518.455.3999
Fax: 518.455.4175



Focusing on Rural New York

The New York State Legislative Commission on Rural Resources was created by the state Legislature in 1982 and began operations in February, 1983. The state Legislature recognizes that the economic and social well-being of all New Yorkers is closely related to the state's rural resources, both human and physical, and that rural areas offer an important alternative to urban living. As a bi-partisan agency in the state Legislature, the Commission's charge includes: examining the impact of rural resources upon the state's economy; reviewing existing laws and regulations as they pertain to rural resources; assessing the effectiveness of programs designed to promote rural viability; and making recommendations and sponsoring legislation in the state Legislature to enhance and protect rural resources.

Consisting of ten members of the Senate and the Assembly (*See inside front cover*), the Commission promotes a state-level focus and avenue for creating and evaluating rural development policy.

The Commission embraces an interdisciplinary action program to redress gaps in existing laws which slight rural needs and to create new initiatives that specifically address unique rural conditions and institutions.

After conducting two statewide rural development symposia and 20 public hearings over a two-year period following its creation, the Commission was ready to introduce its first legislative program in 1986. Since then, 99 bills have been enacted into law, as well as numerous state-local assistance budget items and policy research initiatives. Five additional symposia and numerous public hearings and summits have been held to gather expertise from agency officials, state associations, private citizens' groups and top rural authorities from academia.

The forums have encouraged frank, in-depth discussions of rural development issues — specifically the reform of local government structure, functions, and finance; rural health care; preserving farmland and water resources; maintaining rural roads and bridges; achieving public education reform for the 21st century; stemming the out-migration of rural youth through the provision of good jobs; the control of timber theft on public and private lands; poverty; broadband development; rural aging; energy; agriculture and food systems; economic development; workforce development; rural schools; land use; public transportation; and affordable housing.



Background

Background Continued

An important impact of the Commission's endeavors has been increased sensitivity within the state Legislature, Governor's office, state agencies and associations, colleges and universities to rural needs and institutions. Rural voices have also been added to state councils and task forces as a result of the Commission's work.

The Commission seeks a balance between two sets of demands which confront rural areas: while some localities are faced with burgeoning unplanned growth, others struggle under declining opportunities, rivaling that of many inner cities. Both demands create compelling sets of needs and related public policy issues.

Although New York state is largely rural by geography, its legislature is predominantly urban/suburban in make-up, with only 31 rural legislators out of 212. This is because the vast majority of voters live in the state's metropolitan areas. Hence, the Commission assists rural legislators to voice the concerns of rural New York in state government and encourage a balanced state policy that includes the unique needs of rural areas, as well as urban and suburban areas where the population is greater.

The Commission's scope of work and focus encompasses all aspects of rural life, in keeping with its unique multidisciplinary program and draws on the expertise and support of individual standing committees and legislative staff as well as representation of business and industry and localities. Included in the Commission program to assist state legislators in addressing rural needs are such on-going service activities as: information and research clearinghouse on rural issues (e.g. resource guides and technical assistance); and promotion of effective legislative action and involvement of constituents. Research reports, a newsletter, and background papers are issued periodically. These include: assessments of progress, trends, and assumptions relating to rural development; the design and sponsorship of legislative strategies and action plans for implementation.

Enabling legislation creating the Commission:*

The legislature hereby finds and declares that the economic and social well-being of the people of the state is clearly related to the state's rural resources. The rural economy and environment contribute greatly to the quality and maintenance of life in New York state. Rural areas offer an important alternative to urban living. New York's indispensable rural resources are decentralized, diverse and unique, and their enhancement and protection require special attention in view of their special characterization and needs. A legislative commission on the development of rural resources is hereby established (1) to examine the impact of rural resources upon the state's economy; (2) to review existing laws and regulations as they pertain to rural resources; (3) to assess the effectiveness of programs specifically addressed to rural resource needs and problems; (4) to make such recommendations to the legislature for action as it determines necessary for the enhancement and protection of the state's rural resources.

***Chapter 428, Laws of 1982**

Policy Subject Areas

Following are policy subject areas addressed by the Rural Resources Commission:

- ☑ **Agriculture**
- ☑ **Economic Development/Employment**
- ☑ **Education**
- ☑ **Environment/Land Use/Natural Resources**
- ☑ **Government (Structure, Functions, Finance)**
- ☑ **Health/Human Services**
- ☑ **Housing & Community Facilities**
- ☑ **Transportation**
- ☑ **Technological/Socio-Economic Change**

Rural Resources Legislative Chapters

Agriculture:

Including Agricultural Tourism in State and Local Farmland Protection Programs (Chapter 600, Laws of 2006)

Commissioner's Review of Proposed State Agency Rules and Regulations Affecting Agriculture (Chapter 688, Laws of 2005)

Farmland Viability Program Restructuring (Chapter 249, Laws of 2004)

Technical Amendments to Agricultural Districts Program (Chapter 534, Laws of 1992; Chapter 331 of 2002)

New York Agriculture License Plates; supporting Ag in the Classroom Program (Chapter 314, Laws of 2001)

Food and Agriculture Industry Development Program (Chapter 269, Laws of 2000)

Regional Labels & Trademarks for Agricultural Products (Chapter 209, Laws of 1999)

NYS Agricultural Economic Development Program (Chapter 550, Laws of 1999)

Real Property Transfer: Disclosure in Agricultural Districts (Chapter 411, Laws of 1998)

Recreation/Tourism Programs on Farms & Open Lands (Chapter 362, Laws of 1996)

Coordination of Municipal Land Use Regulations with Agriculture Districts Program (Chapter 534, Laws of 1992)

Business/Economic Development:

Promotes Cluster-Based Industry and Agribusiness Development (Chapter 297, Laws of 2007)

Micro Business Revolving Loan Assistance Grants (Chapter 236, Laws of 2004)

Regional Revolving Loan Program for Small Business (Chapter 477 of 2002)

Rural Economic Development Revitalization (Chapter 471, Laws of 2001)

Review of Business Financial Services in Rural Areas (Chapter 848, Laws of 1987)

Community Facilities, Housing:

Regional Solid Waste Disposal Authority — Chapter 747 of 1987

Education:

Establishing NYS Center for Rural Schools (Chapter 616, Laws of 2008)

Sparsity Correction Aid (1988-93) — Incorporated in state School Aid Budget.

Small Size Correction Aid (1988-91) — Incorporated in state School Aid Budget.

Rural Education Research Program (Chapter 766, Laws of 1990). Funding to support program incorporated in state budgets in 1990-2001; 2006; 2007.

Providing Training in Timber Theft Control for Judicial and Law Enforcement Personnel (Incorporated into State Budget of 2007-08)

Rural Resources Legislative Chapters

Environment, Land Use & Natural Resources:

Promotes the Training of Municipal Planning and Zoning Officials (Chapter 662, Laws of 2006)

Increases Penalty for Failure to File Subdivision Maps (Chapter 687, Laws of 2005)

Planned Unit Development Zoning (Chapter 213, Laws of 2003)

Municipal Officials Serving on County Planning Boards and Regional Planning Councils (Chapter 212, Laws of 2003)

Notice on Challenges Regarding Constitutionality of State and Local laws or regulations (Chapter 296, Laws of 2003)

Filing of Zoning Administrative Decisions (Chapter 476, Laws of 1999)

Alternates to ZBAs & Planning Boards (Chapter 137, Laws of 1998)
Also a model local law.

General Municipal Law Recodification (Chapter 459, Laws of 1997)

Cluster Development (Chapter 417, Laws of 1995)

Comprehensive Plan: process, initiative (Chapter 418, Laws of 1995)

City Subdivision (Chapter 423, Laws of 1995)

Subdivision referral/Counties: GML 239-n (Chapter 358, Laws of 1994)

Exemptions of lots/subdivision plats (Chapter 359, Laws of 1994)

Municipal Comprehensive Plans (Chapter 209, Laws of 1993)

Creation of City Planning Board, site plan, and special use permits (Chapter 211, Laws of 1993)

County participation in intermunicipal planning agreements (Chapter 242, Laws 1993)

Filing of Real Property Deeds (Chapter 257, Laws of 1993)

Local Actions/County Referral (Chapter 544, Laws of 1993)
Authorizing Cluster Development (Chapter 230, Laws of 1992)

Creation of Town and Village Planning Board (Chapter 663, Laws of 1992)

Authorization of Site Plan Review and Special Use Permits (Chapter 694, Laws of 1992)

Land Subdivision Review & Approval (Chapter 727, Laws of 1992)

Joint County Local Planning Board Appts. (Chapter 185 of 1991)

Methods of Procedure/Land Use Regs (Chapter 657, Laws of 1991)

Authorizing City Incentive Zoning in Municipalities (Chapter 629, Laws of 1991 and Chapter 247, Laws of 1992)

Town & Village Zoning Board of Appeals & Area/Use Variances (Chapter 692, Laws of 1991; Chapter 248, Laws of 1992; and Chapter 208, Laws of 1993)

Town & Village Incentive Zoning (Chapter 629, Laws of 1991)

New York Forest Resource Industry Council (Passed both Houses/Vetoed by Governor in 1991)

Adoption of First Municipal Zoning Ordinance or Local Law (Chapter 514 and 515, Laws of 1990)

Rural Resources Legislative Chapters

Government:

Authorizes Adjacent Towns to Elect a Single Town Justice to Pre-
side Over their Town Courts (Chapter 87, Laws of 2008)

Promotes Intermunicipal Cooperation in Planning and Zoning Mat-
ters (Chapter 658, Laws of 2005)

Municipal Cooperation/Sharing of Taxes (S.2771/A.9666 of 2004)
Incorporated into State Budget.

Clarification of Voting Requirements for Municipal Planning and
Zoning Boards (Chapter 662, Laws of 2002)

Extraordinary Expenses for Floods (Chapter 37, Laws of 2001)

Extraordinary Expenses for Snow and Ice Removal (Chapters 38
and 82, Laws of 2001)

Local Court Fees Exemption (Chapter 489, Laws of 2001)

Municipal Exemptions/Index Number Fees (Chapter 314, Laws of
2000)

Electronic Filing of Local Laws (Chapter 379, Laws of 2000)

Claims Settlement/Removal of Limitations (Chapter 428, Laws of
2000)

Municipal & School Serial Bonds for Hurricane Floyd Flood Relief
Expenses (Chapter 440, Laws of 2000)

County Planning Boards and Regional Planning Councils (Chapter
451, Laws of 1997)

Town & Village Court Reimbursement (Chapter 452, Laws of 1997)

Extraordinary Financing/ Flood Damage (Chapter 87, Laws of
1996)

Rural Impact Statements by state agencies (Chapter 171, Laws of
1994)

Rural Aid Reporting by State Agencies (Chapter 212, Laws of
1994)

Interagency Geographic Information Systems Task Force
(Chapter 564, Laws of 1994)

Intermunicipal Cooperation in Planning (Chapter 724, Laws
of 1992)

Intermunicipal Contracts with State Agencies (Chapter 637,
Laws of 1991)

State Office of Rural Affairs (Chapter 890, Laws of 1986)



Rural Resources Legislative Chapters

Health and Human Services:

Recertification of EMS Volunteers (Chapter 119, Laws of 2006)

Medical Personnel Authorized to Supervise Blood Alcohol Tests in rural areas (Chapter 618, Laws of 2006)

Provides scholarship incentives to attract nurse educators (S.2565-A/A.451-B of 2005). Incorporated into State Budget.

Provides Loan Forgiveness incentives to attract and retain nurse faculty (S.3064/A.6138 of 2005). Incorporated into State Budget.

Not-for-Profit Health and Dental Clinics on School Grounds (S.2564-A/A.385-A of 2004). Incorporated in Regents Program Bill which passed in 2005.

Rural Representation on State Hospital Review & Planning Council (Chapter 383, Laws of 2003)

Enabling Alien Dentists and Dental Hygienists to practice in rural areas (Chapter 403, Laws of 2002)

Administration of PPD/TB Tests by Professional Nurses (Chapter 221, Laws of 2002)

State Area Health Education Center System Advisory Board (Passed Both houses/Vetoed by Governor in 2002)

Authorizing a Tuition Exemption for EMS Volunteers who Audit SUNY Courses (S.6279/A.9829 of 2002). Incorporated into state budget bill (S.6258-B).

NYS Rural Health Council (S/2732A/A.4642A). Vetoed by Governor in 1997.

Rural Health Diversification (Chapter 103, Laws of 1993)

Rural Health Networking Program (Chapter 295, Laws of 1991)

Establishing State Office of Rural Health (Chapter 630, Laws of 1991)

Rural Representation on State Public Health Council (Chapter 301, Laws of 1989)

Rural Representation on State Council on Home Care Services (Chapter 302, Laws of 1989)

Establishing NYS Rural Health Care Networking Pilot Program (Chapter 624, Laws of 1986)

Establishing NYS Rural Human Services Networking Pilot Program (Chapter 737, Laws of 1989)



Rural Resources Legislative Chapters

Telecommunications:

Promoting broadband services in rural areas (Chapter 295, Laws of 2006)

PSC to Study Advanced Telcom Availability to Rural Customers (Chapter 132, Laws of 2002)

Transportation:

Promoting DOT Shared Highway Services in Municipalities (Chapter 165, Laws of 2008)

Removing limit on amount towns may pay for highway right of way (Chapter 678, Laws of 2006)

Building Encroachments on Municipal Streets and Roads (Chapter 490, Laws of 2001)

Intermunicipal Cooperation in Sharing Highway Equipment (Chapter 347, Laws of 1997)

Local Roads Research and Coordination Council (Chapter 565, Laws of 1990)

Fines for depositing Debris on Town highways (Chapter 492, Laws of 1989)

Allowance for certain passengers to ride on school buses with pupils (Chapter 598, Laws of 1989)

Rural Public Transportation Coordination Assistance Programs (Chapter 528, Laws of 1988)

Local Road Classification Task Force (Chapter 702, Laws of 1986)

Rural Public Transportation Coordination Assistance Program (Chapters 895 and 896, Laws of 1986)



Rural Resources Publications

Rural Futures — The Commission Newsletter.

Rural County Economic Development Guides for all 43 Rural Counties.
(Ongoing Updates)

Timber Theft in New York. A Legislative Briefing. Final Report. 2008.

New York Land Use Tools. 2008.

Compendium of 2006 and 2007 Rural Education Mini-Grants. 2008.

Rural Aging Summit Report. 2007.

Summary of New York's Timber Trespass Laws. 2007.

Policy Alternatives Supporting Deployment of Broadband Services in Rural Areas of New York State. Report from Empire State Development required by Rural Resources Commission legislation. May 2007.

A Vision for Rural New York. 2006.

Promoting the Training of Municipal Planning and Zoning Officials Fact Sheet. 2006.

Knowledge is Wind Power Brochure. 2006.

Digest of New York's Agriculture and Forest-Related Tax Abatement Laws. 2006.

Guide to Financial and Technical Assistance Programs for Rural Community Water and Sewer Infrastructure Development and Water Quality Management Spring 2006.

Planned Unit Development Guide. Fall 2005.

Promoting Intermunicipal Cooperation for Shared Highway Services. 2005.

New York's Nurse Shortage Crisis. March 2005.

Socio-economic Trends and Well-Being Indicators in NYS: 1950-2000. (3rd Edition). Fall 2004.

Study of Rural Customer Access to Advanced Telecommunication Services. (Report from Public Service Commission required by Rural Resources Commission legislation.) 2003.

Southwestern New York Rural Health Workforce Summit. 2001.

Timber Theft on Public & Private Lands in NYS: Its Impact & Control. 2001.

A Legislative Policy Briefing on Reform of the Forest Tax Law. 1999.

Successful Education Grant Strategies. 1999.

Promoting Partnerships for Ag Industry Growth and Farmland Protection in NYS. 1998.

Recommendations for Change in K-12 Public Education in New York state. Actions by the state and its localities following "Vision 21" Symposium and hearings. 1998.

Potential Savings in Rural Public School Non-Institutional Costs through Shared Services. 1997

New York's K-12 Public Education in the 21st Century. 1996.

Geographic Information Systems: Key to Competitiveness. (Report from NYS Temporary GIS Council required by Rural Resources Commission legislation.) 1996.

Rural Health Resource Guide: Compilation of data and information on Rural Health in New York state. 1995.

Farming on Taxed Ground. 1994

Training Physicians for Rural Health Careers in New York state. 1990.

The Structure, Functions & Financing of Local Government: Adapting to Modern Challenges. August, 1991.

The Design of a Rural Health Services System for the Next Two Decades. 1988.

Toward a Rural Health Policy in New York state. 1986.

Rural New York in Transition. 1985.

Intermunicipal Cooperation: A Survey of Local Governments. 1985.

Rural Resources Model Local Laws and Maps

Model Local Laws:

Notice of Public Hearing to Adjacent Municipality When Certain Proposed Land Use Actions are Within 500 Feet of such Municipality. 2008.

Municipal Regulation and Licensing of Adult Entertainment Businesses: 1999/Revised Fall 2005.

Resolutions: Whereby a Town/Village Provides the Services of a Building Inspector for a Town/Village. 1999/Revised Fall 2005.

Using Civil Penalties for Enforcing Municipal Zoning Regulations. 1997/Revised Fall 2005.

Using Voluntary Mediation in the Resolution of Municipal Planning, Zoning and Land Use Disputes. 1997/Revised Fall 2005.

The classification, maintenance, and rehabilitation of low volume town roads. 1996/Revised Fall 2005.

Appointing Alternate Members to Municipal Planning and Zoning Boards. Fall, 1997.

Maps & Charts:

NYS Land Use Tools Used by Towns. 2008.

Change in Average Annual Wages per Employee by County 2001-2005 Map (2007)

Change in Population of New York Counties 2000-2006 Map.

NYS Higher Education Nursing Program Maps. 2004.

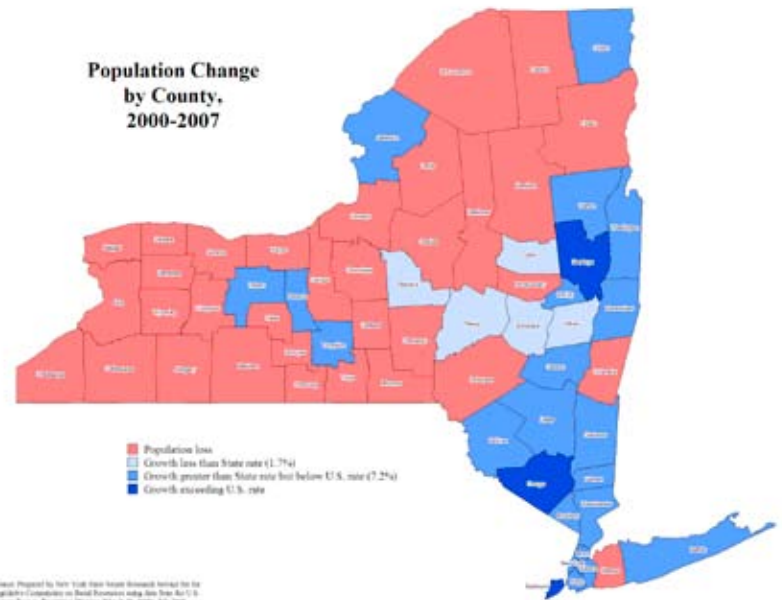
Micropolitan/Metropolitan/Core-Based Statistical Area Maps in New York State. 2004.

NYS Towns by Population Size. (2000 Census)

NYS Population Density by Town. (2000 Census)

2000 Census Data for NYS Municipalities.

1990 Population Density by Town Maps. The maps are five-color with each representing a different density (persons per square mile) category.



Interesting Facts about Rural New York

-
- ✓ New York has over 70,000 miles of rivers and streams.
 - ✓ The Adirondack Park is larger than Yellowstone, Yosemite, Grand Canyon, Glacier, and Olympic Parks combined.
 - ✓ It took 31 years, from 1867-1898, to build the State Capitol.
 - ✓ New York has 1,300 museums and galleries, 64 performing arts centers, and 230 theaters.
 - ✓ New York has more than 400 golf courses and 55 downhill ski areas.
 - ✓ The NYS Canal System is 524 miles long and has 57 locks.
 - ✓ The Seaway Trail covers 454 miles along scenic vistas of Niagara Falls, Lake Ontario, the Thousand Islands, and St. Lawrence Seaway along with grape-growing vineyards and fruit orchards.
 - ✓ New York's largest lake (within its borders) is Oneida measuring 79.8 square miles.
 - ✓ New York's highest waterfall is the 215 foot Taughannock in Cayuga County.
 - ✓ New York is home to 58 species of wild orchids.
 - ✓ New York was the first state to require license plates for cars.
 - ✓ L. Frank Baum, author of the Wizard of Oz, lived in Chittenago (Madison Co). The village now has a yellow brick road and Oz-themed businesses, including an annual Munchkin parade.
 - ✓ Niagara Reservation became the first state park in the US.
 - ✓ The world's smallest church, only 3.5X6 feet, is located in Oneida (Madison County).
 - ✓ The Genesee River in Western New York is one of the few rivers in the world to flow south to north.
 - ✓ New York has the most extensive public library facilities in the US, including the NY Public Library, one of the nation's largest.
 - ✓ The 641 mile transportation network known as the Governor Thomas E. Dewey Thruway is the longest toll road in the US.
 - ✓ Power Mill Park situated outside Rochester has a house on Park Road shaped like a group of mushrooms.
 - ✓ The Catskills are home to the legend of Rip Van Winkle, brown trout, and flycasting.
 - ✓ Rochester is known as both the Flour City and the Flower City. The community is home to the first abolitionist group, bloomers, marshmallows, Jell-O, French's Mustard, baby shoes, gold teeth and the mail chute.
 - ✓ The Erie Canal, built across New York in the 1820s, opened the Midwest to development and helped New York City become a worldwide trading center and New York state as a leading producer of goods and services.
 - ✓ European settlers who brought seeds to New York introduced apples in the 1600s.
 - ✓ The oldest cattle ranch in the US was started in 1747 at Montauk on Long Island.
 - ✓ Philadelphia cream cheese originally came from Philadelphia, New York in Jefferson County.

Interesting Facts about New York State

Demographics and geography:

- ✓ 2000 NYS Population: 18,976,457
- ✓ 2000 Labor Force: 8,682,000
- ✓ 2001 Per Capita Income: \$36,109 (4th highest in the nation)
- ✓ Area of New York State: 54,471 square miles
- ✓ Length of the New York State border: 1,430 miles
- ✓ Four mountain ranges: Adirondack, Catskill, Shawangunk and Taconic.
- ✓ The highest point: Mount Marcy - 5,344 feet above sea level
- ✓ 62 counties, 62 cities, 553 villages and 932 towns
- ✓ Geographic center: In Madison Co., 12 mi. S of Oneida and 26 mi. SW of Utica
- ✓ Largest county by population and area: Kings, 2,465,286; by area: St. Lawrence, 2,686 sq mi.
- ✓ State forest preserves: Adirondacks, 2,500,000 ac.; Catskills, 250,000 ac.
- ✓ State parks: 152



New York State's

Flower: rose
Fruit: apple
Bird: bluebird
Animal: beaver
Fish: trout
Insect: ladybug
Tree: sugar maple
Gem: garnet
Song: I Love New York
Nickname: Empire State
Muffin: apple
Beverage: milk

State Motto:

Excelsior (meaning: Ever upward)

Major Industries in New York state: Manufacturing, foreign trade, commercial and financial transactions, book and magazine publishing, and theatrical productions; cattle, corn, poultry, fruits and vegetables, and wine.

#2 in Apples

#2 in Maple Syrup production

#3 in Wine and grape juice production

#4 in Tart Cherries and Pears

Milk is New York's leading agricultural product with dairy farms found in the Mid-Hudson and Upstate regions.

25% of the state's land area or 7.6 million acres were used by 37,500 farmers to produce a wide variety of food products."

Source: [NYS Agricultural Statistics Service](#)

43 NYS Rural Counties *

2000 Population: 3,087,542

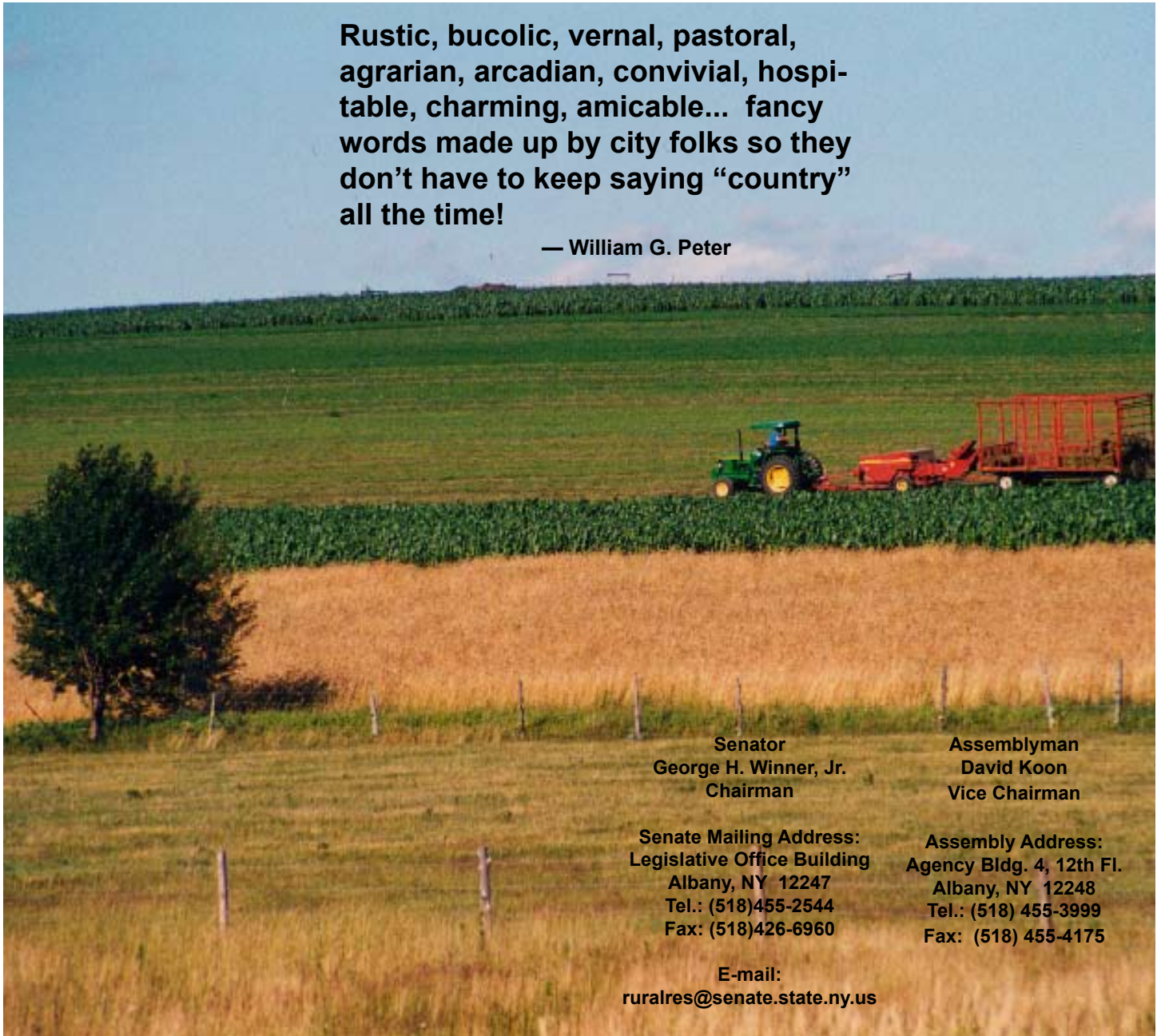
COUNTY	2000 Population	COUNTY	2000 Population
Allegany	49,927	Putnam	95,745
Cattaraugus	83,955	Rensselaer	152,538
Cayuga	81,963	Schenectady	146,555
Chautauqua	139,750	Schoharie	31,582
Chemung	91,070	Schuyler	19,224
Chenango	51,401	Seneca	33,342
Clinton	79,894	St. Lawrence	111,931
Columbia	63,094	Steuben	98,726
Cortland	48,599	Sullivan	73,966
Delaware	48,055	Tioga	51,784
Essex	38,851	Tompkins	96,501
Franklin	51,134	Ulster	177,749
Fulton	55,073	Warren	63,303
Genesee	60,370	Washington	61,042
Greene	48,195	Wayne	93,765
Hamilton	5,379	Wyoming	43,424
Herkimer	64,427	Yates	24,621
Jefferson	111,738		
Lewis	26,944		
Livingston	64,328		
Madison	69,441		
Montgomery	49,708		
Ontario	100,224		
Orleans	44,171		
Oswego	122,377		
Otsego	61,676		

**Counties under 200,000 population.*

You know it's rural when....

Rustic, bucolic, vernal, pastoral, agrarian, arcadian, convivial, hospitable, charming, amicable... fancy words made up by city folks so they don't have to keep saying "country" all the time!

— William G. Peter



Senator
George H. Winner, Jr.
Chairman

Assemblyman
David Koon
Vice Chairman

Senate Mailing Address:
Legislative Office Building
Albany, NY 12247
Tel.: (518)455-2544
Fax: (518)426-6960

Assembly Address:
Agency Bldg. 4, 12th Fl.
Albany, NY 12248
Tel.: (518) 455-3999
Fax: (518) 455-4175

E-mail:
ruralres@senate.state.ny.us