



# FACT SHEET

## State Superfund Program

Receive Site Fact Sheets by *Email*. See "For More Information" to Learn How.

**Site Name:** Dzus Fastener Co., Inc.  
**DEC Site #:** 152033 Operable Unit 03A \*  
**Address:** 425 Union Boulevard  
West Islip, NY 11795

Have questions?  
See  
"Who to Contact"  
Below

### Interim Remedial Measure to Begin at Willetts Creek Footbridges

The New York State Department of Environmental Conservation (NYSDEC) in consultation with the New York State Department of Health is commencing an expedited cleanup in Willetts Creek, related to the Dzus Fastener Co., Inc. site ("site") located at 425 Union Boulevard, West Islip, Suffolk County. Please see the map for the site and Interim Remedial Measure (IRM) work locations. Documents related to the cleanup of this site can be found at the location(s) identified below under "Where to Find Information." IRM field work is anticipated to start on January 9, 2017.

Additional site details, including environmental and health assessment summaries, are available on NYSDEC's website at:

<http://www.dec.ny.gov/cfm/xtapps/derexternal/haz/details.cfm?pageid=3&progno=152033>

#### Interim Remedial Measure

An IRM is a cleanup activity that may be performed when a source of contamination or exposure pathway (the way in which a person may contact contamination) can be effectively addressed without extensive investigation and evaluation. The objective of this IRM is to minimize flooding of the footbridges that cross Willetts Creek.

These footbridges are used to access the Beach Street Middle School and the West Islip High School. The IRM is to include removal of sediment from culverts beneath the footbridges, removal of sediment five feet in either direction of each bridge in Willetts Creek (to provide surface water storage capacity), install a settling pond five foot upstream, and to remove contaminated soil in the vicinity of the footbridges on the school property and in the right-of-way of the footpath on the residential side of the footbridges.

#### *Additional Details*

In consultation with the West Islip School District a limited work schedule has been set forth. For this IRM the hours of operation will be from 7 a.m. – 5 p.m. except for the following time periods:

- West Islip High School: No truck traffic will occur between 6:45 a.m. – 7:20 a.m. and 2 p.m. – 2:25 p.m.
- Beach Street Middle School: No truck traffic will occur between 7:25 a.m. – 8:05 a.m. and 2:20 p.m. – 2:50 p.m.

These time limits are put in place to ensure work does not interfere with the drop-off and pick up of students at their respective schools. The footbridges will remain open during school commuting times.

*\*Operable Unit:* An administrative term used to identify a portion of a site that can be addressed by a distinct investigation and/or cleanup approach. An operable unit can receive specific investigation, and a particular remedy may be proposed.

### *Summary of the Investigation of Willetts Creek*

The Willetts Creek and environs (Operable Unit 3 (OU3)) Remedial Investigation (RI) field activities started in June 2016 and included the sampling and evaluation of surface and subsurface floodplain soils at private residences and school properties adjacent to Willetts Creek, characterization of sediment in the tidal portions of Willetts Creek, characterization of fill material in a shopping plaza, collection of additional sediment samples to fill data gaps related to the nature and extent of cadmium and chromium in Willetts Creek, and completion of visual inspection and sampling of select outfalls and culvert pipes located along the length of Willetts Creek.

Field investigation activities were completed in two phases: Phase 1A and Phase 1B. One hundred ninety-seven (197) soil samples for cadmium and chromium analysis were collected from 39 residential properties located along Willetts Creek during both phases. During Phase 1A, 23 soil samples for cadmium and chromium analysis were collected from the Beach Street Middle School. Eight soil samples for cadmium and chromium analysis were collected from the West Islip High School from five locations within grassy areas that may have received flood waters from Willetts Creek. Four surface soil samples for cadmium and chromium analysis were collected during the Phase 1A sampling event from east and west of the two footbridges on Willetts Creek located at Burling Lane and Edmore Lane.

During the Phase 1B event, a total of nine soil borings were advanced through fill to depths up to 6-feet (ft) below ground surface (bgs), until native sand was encountered. This was to determine if native sand was impacted. Ten samples were collected as part of the boring effort. The outfall inspection and sampling program was also completed during Phase 1B to evaluate sediments and perform camera inspections from outfalls contributing flow to Willetts Creek. Thirteen sediment samples were collected immediately downstream of the identified outfalls. Included as part of the RI Phase 1B sampling event, 15 additional sediment samples were collected from Willetts Creek to fill data gaps related to the vertical and horizontal extent of contamination identified during previous 2013 and 2014 sampling activities. Two sediment samples were also collected from tidal portions of Willetts Creek located south of Montauk Highway to evaluate contaminant migration beyond Lake Capri. Finally, three surface soil samples were collected north of the Dzus Fastener Company, Inc. site along the railroad track to evaluate the potential for contaminated soils from the site to have been moved north of the site and to provide additional boundary definition of site-related contamination.

Upon completion of the RI report for OU3 (anticipated by end of December 2016), the report will be available to the public.

### **Next Steps**

The IRM work plan the Willetts Creek footbridge sediment removal project is available to the public (see “Where to Find Information” below). Upon completion of the work, a Construction Completion Report will be prepared that documents the activities that were performed.

### **Background**

Location:

The footbridges are located at Burling Lane and Edmore Lane and cross Willetts Creek.

Site Features:

The Dzus Fastener site is one acre in size and is located in a mixed residential, commercial, and industrial area. The site is triangular in shape and encompasses the area of the former leaching pools. The site is bounded by Union Avenue to the south, the former Dzus facility and Beach Street to the west, and Long Island Rail Road tracks to the north. Immediately to the east of the site is Willetts Creek which drains south into Lake Capri, an eight-acre man-made lake. Lake Capri drains into the tidal portion of Willetts Creek through a culvert located under Montauk Highway.

Current Zoning/Use(s):

The facility changed its name from Dzus Fastener Co. Inc. to DFCI Solutions, Inc. in 2001, but operations remained the same since its construction at this location in 1937. Operations included the design and manufacture of ¼-turn fasteners, quick acting latches and panel strips in steel, stainless steel, aluminum and plastic for use in military and commercial aerospace, transportation, electronics, air handling, refrigeration, motor control and computer industries to secure access panels, covers or detachable components. In 2015, DFCI ceased operations and moved all equipment out of the facility. The onsite building is currently vacant. Current zoning for the property is industrial-manufacturing and processing.

Historical Use(s):

Dzus Fastener (incorporated in the State of New York under the name Dzus Fastener Co. Inc. in 1936) produced fasteners and springs from 1932 to 2015. Wastes from metal plating, tumbling, electroplating, chromic acid, anodizing, and special finishing operations consisted of oils, heavy metals and salts. Leaching pools on-site were used for the disposal of hazardous wastes. A Phase I Investigation was completed by NYSDEC in 1984 and a Phase II Investigation report was submitted by Dzus in August of 1990. An Interim Remedial Measure (IRM) was completed by Dzus in October 1990, during which approximately 1,960 cubic yards of contaminated soil from the area of the industrial leach field were removed. The site boundary was modified to include the area of the footprint of the consolidated and stabilized area. Soils and groundwater were contaminated with cadmium, chromium, cyanide, and organic compounds.

Operable Unit(s):

There are three site-related operable units. An operable unit (OU) represents a portion of a remedial program for a site that for technical or administrative reasons can be addressed separately to investigate, eliminate or mitigate a release, threat of release or exposure pathway resulting from the site contamination. Operable Unit 1 (OU1) encompasses the one-acre source area (on-site) at the eastern end of the former Dzus facility property along with off-site areas of the Dzus facility. Operable Unit 2 (OU2) encompasses the contaminated sediments and groundwater in Willetts Creek and Lake Capri. Operable Unit 3 (OU3) encompasses an area of wetlands adjacent to and inclusive of the Willetts Creek channel which were found to be contaminated during routine post-remedial action effectiveness sampling. The sediment and soil near the footbridges addressed under the current IRM are related to OU3.

A State Superfund Remedial Investigation/Feasibility Study (RI/FS) which included investigation of the entire facility began in May 1992 and a report was submitted in October 1994. A Record of Decision (ROD) for OU-1 was issued in March of 1995. Approximately 8100 cubic yards of contaminated soils were consolidated and remediated by in-situ stabilization/solidification. The remedial action was completed in December 1996.

A ROD for Operable Unit 2 (off-site sediment and groundwater) was signed in October 1997. Dredging of Lake Capri and a portion of Willetts Creek was conducted between June and December 1999. 19,000 cubic yards of sediment were removed from Lake Capri and Willetts Creek.

The activities related to the investigation of OU3 are discussed under *Summary of the Investigation of Willetts Creek, above*.

**State Superfund Program:** New York's State Superfund Program (SSF) identifies and characterizes suspected inactive hazardous waste disposal sites. Sites that pose a significant threat to public health and/or the environment go through a process of investigation, evaluation, cleanup and monitoring.

NYSDEC attempts to identify parties responsible for site contamination and require cleanup before committing State funds.

For more information about the SSF, visit: <http://www.dec.ny.gov/chemical/8439.html>

## FOR MORE INFORMATION

### Where to Find Information

Project documents are available at the following location(s) to help the public stay informed.

West Islip Public Library  
Attn: Grace O'Connor  
3 Higbie Lane  
West Islip, NY 11795  
phone: (631) 661-7080  
(goconnor@suffolk.lib.ny.us)

### Who to Contact

Comments and questions are always welcome and should be directed as follows:

#### Project Related Questions

Payson Long, P. E.  
Department of Environmental Conservation  
Division of Environmental Remediation  
625 Broadway  
Albany, NY 12233-7017  
518-402-9813  
payson.long@dec.ny.gov

#### Site-Related Health Questions

Scarlett McLaughlin  
New York State Department of Health  
Bureau of Environmental Exposure Investigation  
Empire State Plaza, Corning Tower, Room 17  
Albany, NY 12237  
(518)-402-7860  
BEEI@health.ny.gov

**We encourage you to share this fact sheet with neighbors and tenants, and/or post this fact sheet in a prominent area of your building for others to see.**

**Receive Site Fact Sheets by Email**

Have site information such as this fact sheet sent right to your email inbox.

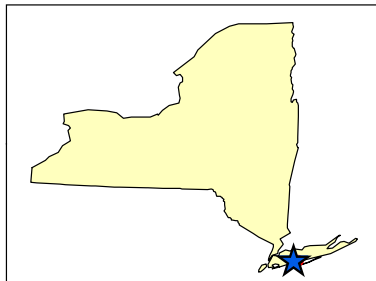
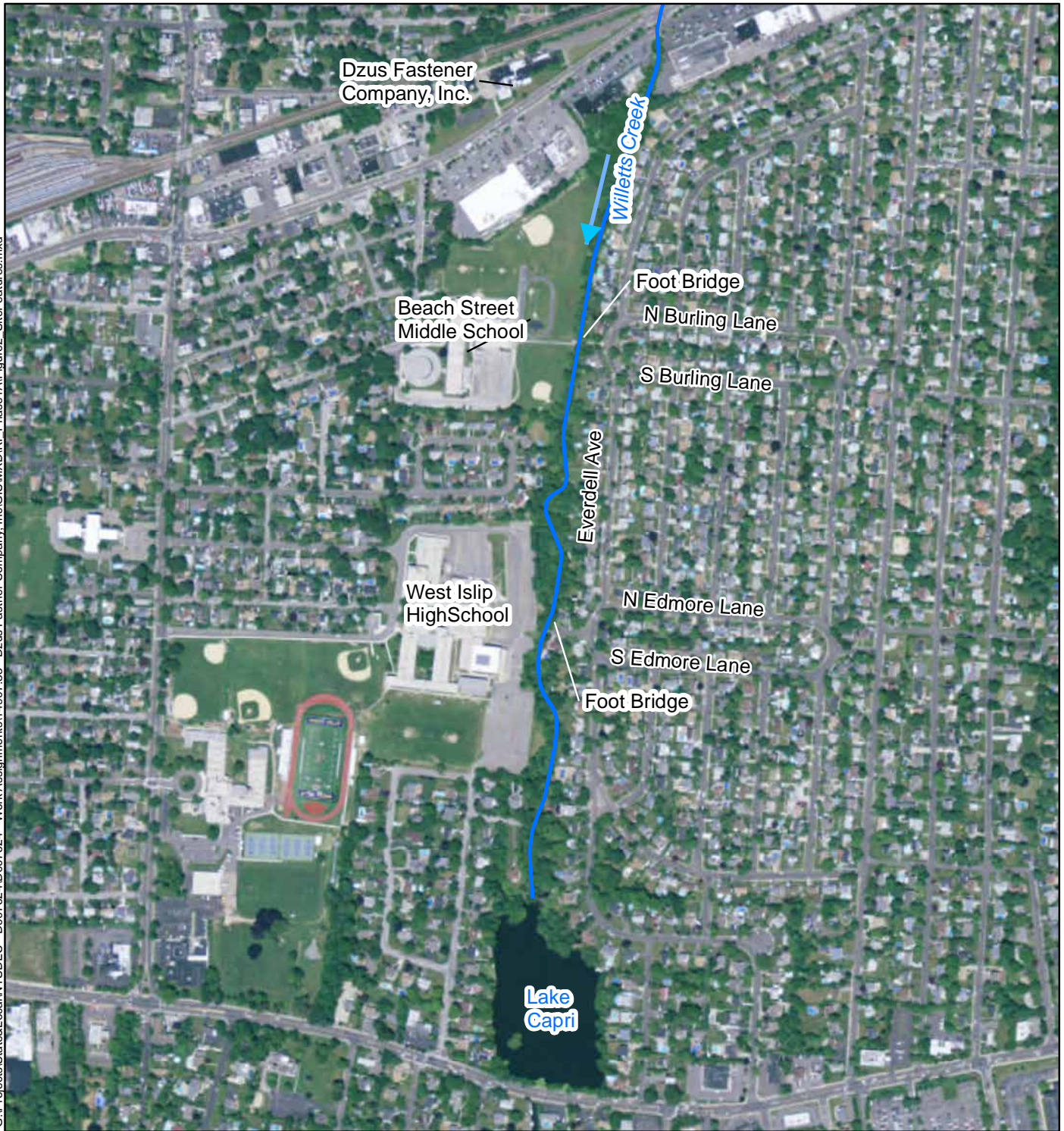
NYSDEC invites you to sign up with one or more contaminated sites county email listservs available at the following web page:

<http://www.dec.ny.gov/chemical/61092.html>. It's quick, it's free, and it will help keep you *better informed*.

As a listserv member, you will periodically receive site-related information/announcements for all contaminated sites in the county(ies) you select.

Note: Please disregard if you already have signed up and received this fact sheet electronically.

G:\Projects\State&Local\NYSDEC - D007624\D007624 - Work Assignments\14907.33 - Dzus Fastener Company, Inc\GIS\MXD\RI - Phase 1\Figure2 - SiteFeatures.mxd



**Legend**  
~ Willetts Creek

Figure 2  
**Site Features**  
**Dzus Fastener Company, Inc.**  
**West Islip, NY**

Map Date: 6/26/2016  
Projection: NAD83 State Plane New York Long Island

