

*Preventing the Next Oroville Dam*  
*Accident;*  
*A Report on Dam Safety*



**Senator David Carlucci**

## Classification of Westchester and Rockland Dams

According to DEC, dams are classified based potential safety hazard (673.5 Hazard classifications). Below are the classifications with their definitions:

(b) The hazard classifications for dams are assigned based on the particular physical characteristics of a dam and its location, may be assigned irrespective of the size of the dam, as appropriate, and are as follows:

- (1) **Class A** or low hazard dam. A dam failure is unlikely to result in damage to anything more than isolated or unoccupied buildings, undeveloped lands, minor roads such as town or county roads; is unlikely to result in the interruption of important utilities, including water supply, sewage treatment, fuel, power, cable or telephone infrastructure; and/or is otherwise unlikely to pose the threat of personal injury, substantial economic loss or substantial environmental damage.
- (2) **Class B** or intermediate hazard dam. A dam failure may result in damage to isolated homes, main highways, and minor railroads; may result in the interruption of important utilities, including water supply, sewage treatment, fuel, power, cable or telephone infrastructure; and/or is otherwise likely to pose the threat of personal injury and/or substantial economic loss or substantial environmental damage. Loss of human life is not expected.
- (3) **Class C** or high hazard dam. A dam failure may result in widespread or serious damage to home(s); damage to main highways, industrial or commercial buildings, railroads, and/or important utilities, including water supply, sewage treatment, fuel, power, cable or telephone infrastructure; or substantial environmental damage; such that the loss of human life or widespread substantial economic loss is likely.
- (4) **Class D** or negligible or no hazard dam. A dam that has been breached or removed, or has failed or otherwise no longer materially impounds waters, or a dam that was planned but never constructed. Class D dams are considered to be defunct dams posing negligible or no hazard. The department may retain pertinent records regarding such dams.

**Class A: 156**

**Class B: 62**

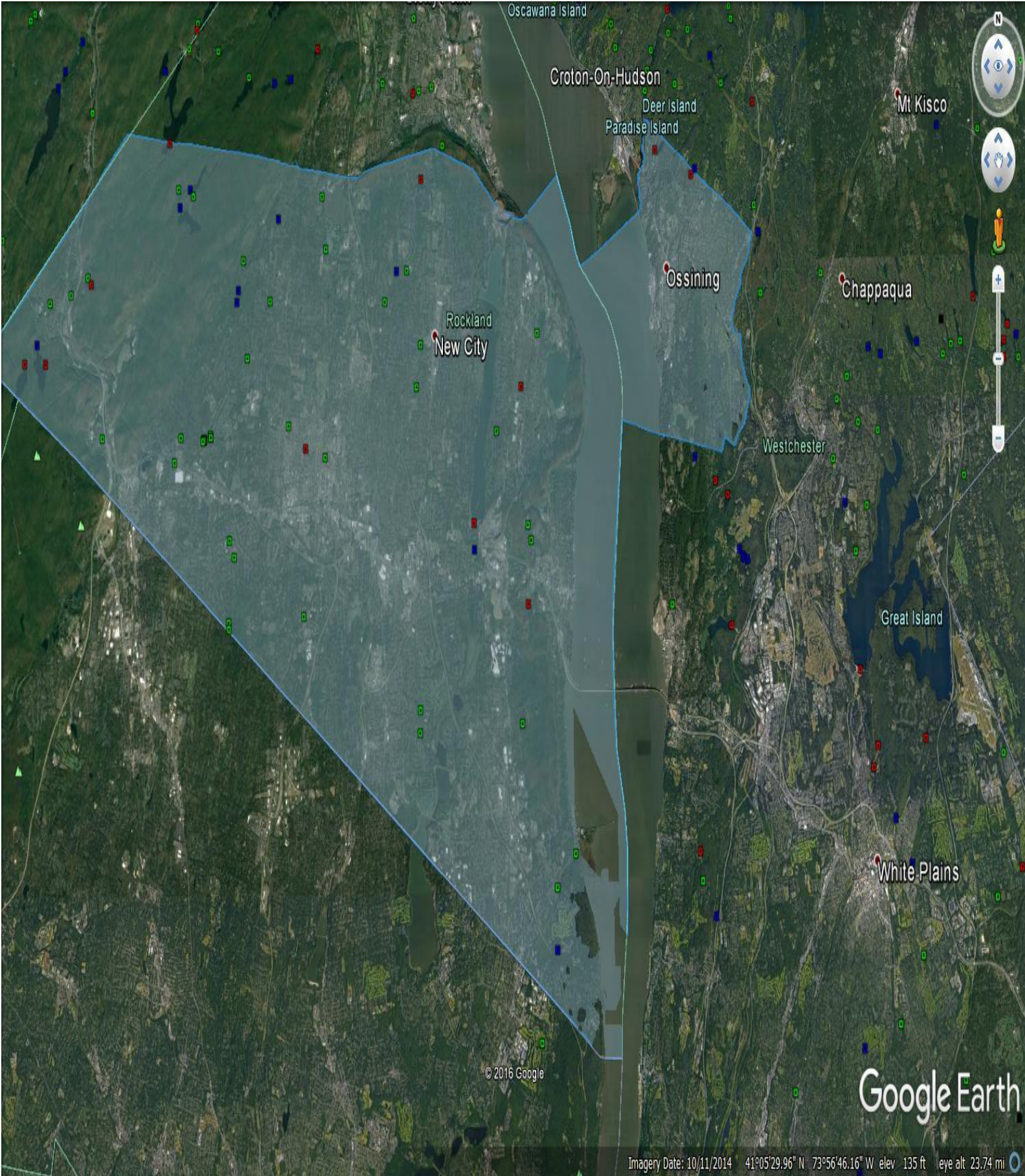
**Class C: 46**

**Class D: 0**

**Total: 264**

\*Color coded on map on next page





© 2016 Google

Google Earth

Imagery Date: 10/11/2014 41°05'29.96" N 73°56'46.16" W elev 135 ft eye alt 23.74 mi

## Overview of Dams in Rockland

<b>Dam</b>	<b>Class</b>	<b>Date of Last Inspection</b>	<b>County</b>	<b>Municipality</b>	<b>River or Stream</b>
Conti Pond Dam	A	6/12/1985	Rockland	N/A	TR-RAMAPO RIVER
Ramapo River Dam	A	N/A	Rockland	Village of Sloatsburg	RAMAPO RIVER
Mirror Lake Dam	A	9/4/2011	Rockland	N/A	TR-RAMAPO RIVER
Pine Meadow Brook Dam	A	10/30/2007	Rockland	N/A	PINE MEADOW BROOK
Christie Brook Dike	A	4/28/1994	Rockland	N/A	PINE MEADOW BROOK
Hillburn Dam	A	1/8/1975	Rockland	N/A	RAMAPO RIVER
Town Of Ramapo Dam	A	6/21/1983	Rockland	N/A	TR-MAHWAH RIVER
Ramapo Cirque Dam	A	6/21/1983	Rockland	N/A	TR-MAHWAH RIVER
Schwartz Estate Pond Dam 2	A	12/17/2010	Rockland	Town of Ramapo	MAHWAH
Schwartz Estate Pond Dam 1	A	12/17/2010	Rockland	Town of Ramapo	MAHWAH
Schwartz Estate Pond Dam 3	A	12/17/2010	Rockland	Town of Ramapo	MAHWAH
Schwartz Estate Pond Dam 4	A	12/17/2010	Rockland	Town of Ramapo	RAMAPO RIVER
Schwartz Estate Pond Dam 5	A	12/17/2010	Rockland	Town of Ramapo	MAHWAH
Schwartz Pond Dam	A	3/6/1975	Rockland	N/A	PINETREE BROOK
Schwartz Estate Pond Dam A	A	12/3/2008	Rockland	Town of Ramapo	MAHWAH RIVER
Schwartz Estate Pond Dam B	A	12/3/2008	Rockland	Town of Ramapo	Spring Valley
Schwartz Estate Pond Dam 7	A	12/17/2010	Rockland	Town of Ramapo	MAHWAH RIVER
Ramapo Pond Dam	A	1/9/2009	Rockland	N/A	TR-MAHWAH RIVER

Willow Tree Park Pool Dam	A	9/15/2001	Rockland	N/A	TR-MAHWAH RIVER
Tora High School Dam	A	5/12/2009	Rockland	Town of Ramapo	MAHWAH RIVER
Allabough Pond Dam	A	10/22/2014	Rockland	Village of Airmont	Saddle River
Mountain Lake Dam	A	10/22/2014	Rockland	N/A	ROARING BROOK
200 CHERRY LANE DAM	A	9/22/2009	Rockland	N/A	Saddle River
Island Lake Dam	A	9/22/2009	Rockland	N/A	Saddle River
Blueberry Hill Dam	A	10/17/2013	Rockland	Town of Ramapo	TR-PASCACK CREEK
Onderdonks Pond Dam	A	12/16	Rockland	N/A	TR-PASCACK CREEK
Minisceongo Golf Course Dam	A	12/31/1901	Rockland	Town of Ramapo	SOUTH BRANCH MINICEONGO CREEK
RAMAPO PAINT SLUDGE DAM	A	9/3/2015	Rockland	Town of Ramapo	TR OF MINISCEONGO CREEK
Camp Jawonio Pond Dam	A	9/4/2015	Rockland	Town of Clarkstown	N/A
Nob Hill Dam	A	12/31/1901	Rockland	N/A	N/A
New City Dam #2	A	9/5/2001	Rockland	N/A	TR-HACKENSACK RIVER
New City Dam #1	A	4/3/2015	Rockland	N/A	TR-HACKENSACK RIVER
Henry Kaufman Pond Dam	A	4/16/1998	Rockland	N/A	Naurashan Brook
Thofehr Pond Dam	A	1/23/1975	Rockland	N/A	TR-NAURAUSHAN BOOK
Bleauville State Park Dam	A	11/13/2007	Rockland	Town of Orangetown	N//A
Katz Dam	A	11/13/2007	Rockland	N/A	TR-W BR HACKENSACK RIVER
Swartwout Lake Dam	A	12/29/2009	Rockland	N/A	E BRANCH HACKENSACK RIVER
Heatons Pond Dam	A	10/16/2009	Rockland	Town of Clarkstown	E BRANCH HACKENSACK RIVER
Garrabrant Pond Dam	A	1/23/1975	Rockland	N/A	TR-HACKENSACK RIVER



Felter Dam	A	1/23/1975	Rockland	N/A	TR-HACKENSACK RIVER
Piermont Paper Company Dam	A	1/23/1975	Rockland	N/A	Sparkill Creek
Boss Pond Dam	A	1/23/1975	Rockland	Town of Orangetown, Village of Piermont	Sparkill Creek
New Sebago Beach Dam	A	9/27/2012	Rockland	N/A	TR-LAKE SEBAGO
Lake Kanawauke Dam	A	7/3/1973	Rockland	N/A	TR-LAKE SEBAGO
Lily Pond Dam	A	10/30/2007	Rockland	Town of Ramapo	N/A
Breakneck Pond Dam	A	11/14/1984	Rockland	Vilage of Haverstraw	N/A
Hessian Brook Swimming Pool Dam	A	1/22/1975	Rockland	N/A	Hessian Brook
Doodletown Brook R R Dam	A	11/6/2009	Rockland	N/A	DOODLETOWN BROOK
Tomkins Lake Dam	A	9/18/2001	Rockland	N/A	TR-CEDAR POND BROOK
Addison Boyce Lake Dam	A	9/21/2009	Rockland	Town of Stony Point	TR-CEDAR POND BROOK
Catholic Charities Dam	A	1/15/1975	Rockland	N/A	TR-CEDAR POND BROOK
Ambrey Pond Dam	A	6/24/2010	Rockland	Town of Stony Point	Timp Mountain Brook
Ibm Edcenter Dam A	B	10/18/2013	Rockland	Town of Orangetown	TR-SPARKILL CREEK
Klein Avenue Detention Basin Dam	B	9/3/2015	Rockland	Town of Clarkstown	HACKENSACK RIVER
Schwartz Estate Pond Dam 6	B	10/17/2013	Rockland	Village of Montebello	MAHWAH RIVER
Tivoli Lake Spillway	B	9/4/2014	Rockland	Town of Ramapo	TR-RAMAPO RIVER
Wesley Chapel Dam #1	B	10/17/2013	Rockland	Village of Wesley Hills	TR-MAHWAH RIVER
Wesley Chapel Dam #2	B	5/17/2012	Rockland	Village of wesley Hills	TR-MAHWAH RIVER
Pine Meadow Lake Dam	B	10/17/2013	Rockland	Town of Ramapo	PINE MEADOW BROOK
Christie Brook Dam #1	B	10/17/2013	Rockland	Town of Ramapo	PINE MEADOW BROOK
John Patrick Pond Dam	B	9/5/2014	Rockland	Town of Ramapo	TR-MAHWAH RIVER
Henrich Pond Dam	B	9/4/2015	Rockland	Town of Clarkstown	n/a

Third Reservoir Spillway And Dam	B	9/4/2015	Rockland	Town of Haverstraw	TR-HORSE CHOCK BROOK
Second Reservoir Dam	B	9/4/2015	Rockland	Town of Haverstraw	TR-HORSE CHOCK BROOK
Stony Point Dam	B	12/5/2014	Rockland	Town of Stony Point	CEDAR POND BROOK
Lake Boyce Dam	B	10/18/2013	Rockland	Town of Stony Point	TR-HUDSON RIVER
Tomkins Cove Dam	B	9/4/2015	Rockland	Town of Stony Point	TR-HUDSON RIVER
Doodletown Dam	B	10/18/2013	Rockland	Town of Stony Point	DOODLETOWN BROOK
Potake Lake Dam	C	9/4/2014	Rockland	Town of Ramapo	TR-RAMAPO RIVER
Tivoli Lake Dam	C	9/4/2014	Rockland	Town of Ramapo	TR-RAMAPO RIVER
Pine Grove Lake Dam	C	9/4/2014	Rockland	Village of Sloatsburg	TR-RAMAPO RIVER
Lake Sebago Dam	C	9/5/2014	Rockland	Town of Ramapo	STONY BROOK CREEK
Lake Kanawauke Dam	C	9/18/2014	Rockland	Town of Haverstraw	STONY BROOK
Lake Welch Dam	C	9/4/2015	Rockland	Town of Stony Point	MINISCEONGO CREEK
First Reservoir Dam	C	9/4/2015	Rockland	Town of Haverstraw	HORSE CHOCK BROOK
Garnerville Dam	C	9/5/2014	Rockland	Village of West Haverstraw	MINISCEONGO CREEK
Lake Lucille Dam	C	9/5/2014	Rockland	Town of Clarkstown	HACKENSACK RIVER
Congers Lake Dam	C	9/3/2015	Rockland	Town of Clarkstown	E BRANCH HACKENSACK RIVER
Lake Suzanne Dam	C	9/4/2014	Rockland	Town of Ramapo	PASCACK BROOK
Lake Deforest Dam	C	9/5/2014	Rockland	Town of Clarkstown	HACKENSACK RIVER
CENTRAL NYACK DAM	C	9/3/2015	Rockland	Town of Clarkstown	n/a
<b><u>Class A: 52</u></b>					
<b><u>Class B: 16</u></b>					
<b><u>Class C: 13</u></b>					
<b><u>Total: 81</u></b>					

## Overview of Dams in Westchester

Dam Name	Class	Date of Last Inspection	County	Municipality	River or Stream
Hillview Reservoir	C	3/20/2014	Westchester	Yonkers	N/A
Grassy Sprain Reservoir	C	3/21/2014	Westchester	Yonkers	GRASSY SPRAIN BROOK
New Rochelle Reservoir #3	C	3/19/2017	Westchester	Town of Eastchester	HUTCHINSON RIVER
New Rochelle Reservoir #1	C	3/19/2017	Westchester	Town of Eastchester	LYON CREEK
Larchmont Water Company Dam #2	C	3/19/2017	Westchester	City of New Rochelle, Town of Mamaroneck	SHELDRAKE RIVER
Irvington Water Works	C	5/28/2015	Westchester	Village of Irvington	n/a
Mamaroneck Reservoir	C	3/30/2015	Westchester	Town of Harrison	MAMARONECK RIVER
Blind Brook Club	C	3/30/2015	Westchester		BLIND BROOK
Forest Lake	C	6/18/2014	Westchester	Town of Harrison	n/a
White Plains Reservoir #2	C	6/11/2015	Westchester	City of White Plains	TR-BRONX RIVER
White Plains Reservoir #1	C	6/11/2015	Westchester	City of White Plains	DEALEYS BROOK
Kensico	C	8/28/2014	Westchester	Town of North Castle	BRONX RIVER
Tarrytown Waterworks	C	5/28/2015	Westchester	Village of Tarrytown, Town of Greenburgh, Town of Mount Pleasant	TR-SAW MILL RIVER
Swan Lake	C	3/20/2014	Westchester	Town of Mount Pleasant	POCANTICO RIVER
Pocantico Lake	C	8/28/2014	Westchester	Town of Mount Pleasant	POCANTICO RIVER
Paterno	C	4/30/2015	Westchester	Town of North Castle	n/a
Windmill Lake	C	3/30/2015	Westchester	Town of North Castle	TR-WINDMILL LAKE
North Lake	C	4/30/2015	Westchester	Town of North Castle	MIANUS RIVER



Byram Lake Reservoir Dam	C	3/31/2015	Westchester	Town of North Castle	BYRAM RIVER
Still Lake	C	3/21/2014	Westchester	Town of North Castle	TR-NEW CROTON RESERVOIR
New Croton Reservoir	C	8/29/2014	Westchester	Town of Cortlandt	CROTON RIVER
Furnace Brook Lake	C	5/1/2015	Westchester	Town of Cortlandt	FURNACE BROOK
Cortlandt Lake	C	6/18/2014	Westchester	Town of Cortlandt	SPROUT BROOK
Lake Lincolndale	C	5/1/2015	Westchester	Town of Somers	TR-PLUM BROOK
Amawalk	C	8/29/2014	Westchester	Town of Somers	MUSCOOT RIVER
Sparkle Lake	C	5/29/2015	Westchester	Town of Yorktown	TR-HALLOCKS MILL BROOK
Cross River	C	8/29/2014	Westchester	Town of Bedford	CROSS RIVER
Titicus	C	8/29/2014	Westchester	Town of North Salem	TITICUS RIVER
Mill River	C	4/30/2015	Westchester	Town of Pound Ridge	MILL RIVER
Trinity	C	4/30/2015	Westchester	Town of Pound Ridge	TR-MILL RIVER
Browns Reservoir	C	6/17/2014	Westchester	Town of Lewisboro	W BRANCH SILVER MINE RIVER
Minkel Dam	C	3/31/2015	Westchester	Town of Ossining	SING-SING BROOK
Indian Brook Reservoir	C	5/1/2015	Westchester	Town of Ossining	CROTON RIVER
Glenwood Lake	B	6/11/2012	Westchester	City of New Rochelle	TR-HUTCHINSON RIVER
Beechmont Lake	B	6/11/2012	Westchester	City of New Rochelle	PINE BROOK
Paine Lake	B	6/11/2012	Westchester	City of New Rochelle	TR-PINE BROOK
Reservoir #2	B	3/19/2014	Westchester	City of New Rochelle	HUTCHINSON RIVER
Larchmont	B	6/11/2012	Westchester	Village of Larchmont	SHELDRAKE RIVER
Crestwood	B	8/1/2012	Westchester	City of Yonkers	TR-BRONX RIVER
South Westchester Detention Basin	B	8/1/2012	Westchester	City of Yonkers	TR-HUDSON RIVER
Carpenter Pond	B	2/28/2013	Westchester	City of New Rochelle	SHELDRAKE RIVER

Bowman Ave	B	3/22/2012	Westchester	City of Rye	BLIND BROOK
Town Of Mt. Pleasant Water District #1	B	3/20/2014	Westchester	Town of Mount Pleasant	ROCKEFELLER BROOK
Town Of Mt. Pleasant Water District #2	B	3/20/2014	Westchester	Town of Mount Pleasant	ROCKEFELLER BROOK
Town of Mt. Pleasant Water District #3	B	3/20/2014	Westchester	Town of Mount Pleasant	ROCKEFELLER BROOK
Woodlands Lake	B	3/19/2014	Westchester	Town of Greenburgh	SAW MILL RIVER
Town Of Mt. Pleasant Water District #1	B	3/20/2014	Westchester	Town of Mount Pleasant	ROCKEFELLER BROOK
Ferguson Lake	B	3/20/2014	Westchester	Town of Mount Pleasant	ROCKEFELLER BROOK
Sleepy Hollow Country Club	B	3/22/2012	Westchester	Town of Mount Pleasant	TR-GORY BROOK
Lake Dark Hollow	B	10/1/2013	Westchester	Town of New Castle	TR-PLEASANTVILLE COVE
Howlands Lake	B	3/30/2015	Westchester	Town of Bedford	KISCO RIVER
Long Pond	B	3/31/2015	Westchester	Town of North Castle	MIANUS RIVER
Wampus Lake Reservoir	B	3/22/2012	Westchester	Town of North Castle	WAMPUS RIVER
Chiselhurst	B	5/28/2015	Westchester	Town of North Castle	TR-SAW MILL RIVER
Lounsbury Pond	B	2/24/2012	Westchester	City of Peekskill, Town of Cortlandt	DICKEY BROOK
Dickerson Pond	B	2/24/2012	Westchester	Town of Cortlandt	TR-FURNACE BROOK
Pine Lake Park	B	9/30/2013	Westchester	Town of Cortlandt	FURNACE BROOK
Hollowbrook Dam	B	5/1/2015	Westchester	Town of Cortlandt	PEEKSKILL HOLLOW CREEK
Baxter Preserve Pond	B	8/28/2014	Westchester	Town of North Salem	TR-TITICUS RIVER
Summit Lake Dam And Dike	B	5/29/2015	Westchester	Town of Somers	TR-W BRANCH CROTON RIVER
Muscoot	B	9/20/2012	Westchester	Town of Bedford, Town of Somers	CROTON RIVER
MC Whatmore Lake	B	9/19/2012	Westchester	Town of Lewisboro	TR-CROOK BROOK

Dam					
CROTON ROAD DAM AND DIKE	B	3/31/2015	Westchester	Town of New Castle	n/a
Campfire Lake	B	3/23/2012	Westchester	Town of Mount Pleasant, Town of New Castle	TR-POCANTICO RIVER
IBM Corp Technical Institute	B	3/21/2014	Westchester	Town of Mount Pleasant	TR-BRONX RIVER
Chiselhurst	B	5/28/2015	Westchester	Town of New Castle	TR-SAW MILL RIVER
Teatown Lake	B	9/20/2012	Westchester	Town of Yorktown	BAILEY BROOK
Campfire Lake	B	3/23/2012	Westchester	Town of Mount Pleasant, Town of New Castle	TR-POCANTICO RIVER
Chimney Corners	B	5/1/2015	Westchester	Town of Cortlandt	FURNACE BROOK
Lake Katonah	B	4/30/2015	Westchester	Town of Lewisboro	TR-CROTON RIVER
Scotts Reservoir	B	2/22/2012	Westchester	Town of Lewisboro	WEST BRANCH SILVERMINE CREEK
Howlands Lake	B	3/30/2015	Westchester	Town of Bedford	KISCO RIVER
Blue Heron	B	2/27/2013	Westchester	Town of Bedford	TR-CROSS RIVER RESERVOIR
Westchester Lake	B	2/24/2012	Westchester	Town of Cortlandt	ANNSVILLE CREEK
Rye Brook Estates	B	3/30/2015	Westchester	Village of Rye Brook	TR-BUND BROOK
Murray Hill Estates	B	6/11/2012	Westchester	Town of Scarsdale	Town of Scarsdale
Spring Lake	B	3/30/2015	Westchester	Town of Harrison, City of White Plains	TR-MAMARONECK RIVER
Silver Lake	B	3/30/2015	Westchester	City of White Plains	W BRANCH MAMARONECK RIVER
Hollowbrook	B	5/1/2015	Westchester	Town of Cortlandt	PEEKSKILL HOLLOW CREEK
Tibbetts Park Dam	A	7/9/2013	Westchester	n/a	TIBBETTS BROOK
Tibbetts Park Dam #2	A	7/9/2013	Westchester	n/a	TIBBETTS BROOK
Pelham Lake Dam	A	1/30/2008	Westchester	n/a	HUTCHINSON RIVER
Hutchinson River Parkway Detention	A	12/31/1901	Westchester	n/a	TR-MAMARONECK

Dam					RIVER
Baar Ridge Pond li Dam	A	9/22/2008	Westchester	n/a	n/a
Pleasantville Water Works Dam	A	3/27/1997	Westchester	n/a	NANNY HAGEN BROOK
Premium Mill Pond	A	3/24/1997	Westchester	n/a	PREMIUM RIVER
Hampshire Country Club	A	10/4/2013	Westchester	n/a	n/a
Lake Hawthorne	A	3/9/2011	Westchester	Town of North Salem	TR-W BR CROTON RIVER
Michelle Estates	A	3/22/2007	Westchester	n/a	TR-CROSS RIVER
Schoen Pond	A	4/3/1972	Westchester	n/a	TR-PEEKSKILL HOLLOW BROOK
Camp Field Reservoir	A	6/19/2009	Westchester	n/a	n/a
Pond #122	A	12/8/1994	Westchester	n/a	STONE CREEK-TR
Pound Ridge Skating Pond	A	4/4/1972	Westchester	n/a	TR-MILL RIVER
Beaver Lake Dam	A	8/24/2005	Westchester	n/a	STONE HILL RIVER
Mahstedt Reservoir	A	2/2/2009	Westchester	n/a	TR-PINE BROOK
Locanthy Pond	A	9/24/2008	Westchester	n/a	FURNACE BROOK
Hodgman Dam	A	7/9/2013	Westchester	n/a	BRONX RIVER
Popham Road	A	n/a	Westchester	n/a	BRONX RIVER
Manor Pond	A	3/25/2008	Westchester	n/a	n/a
Lake Ridgeway	A	1/31/2008	Westchester		TR-MAMARONECK RIVER
French-American School	A	8/13/2011	Westchester	City of White Plains	TR-MAMARONECK RIVER
Edgar Bronfman Lake	A	1/31/2008	Westchester		WEST BRANCH BLIND BROOK
Sleepy Hollow	A	1/28/2008	Westchester	Village of Sleepy Hollow	POCANTICO RIVER
Brookside Lower	A	1/31/2008	Westchester	n/a	TR-BLIND BROOK



Kensico Detention Basin #2a	A	n/a	Westchester	Town of Mount Pleasant	TR- KENSICO RESERVOIR
Mill Pond	A	3/21/2007	Westchester	n/a	BYRAM RIVER
Beverly Road	A	3/30/1995	Westchester	n/a	TR-BLIND BROOK
High Point Village Stormwater Pond	A	n/a	Westchester	n/a	n/a
High Point Village Stormwater Pond #2	A	n/a	Westchester	n/a	n/a
Kensico Detention Basin #2a	A	n/a	Westchester	Town of Mount Pleasan	TR- KENSICO RESERVOIR
Kensico Detention Basin #37	A	n/a	Westchester	Town of Mount Pleasan	TR-KENSICO RESERVOIR
Nichols Preserve	A	n/a	Westchester	Town of North Castle	n/a
Kinderogen Lake	A	3/14/2008	Westchester	Village of Briarcliff Manor	TR-POCANTICO RIVER
High Point Village Stormwater Pond #2	A	n/a	Westchester	n/a	n/a
Cogger	A	12/31/1901	Westchester	Town of New Castle	TR-HEAPTAUGUA LAKE
Gifford Pond	A	3/8/2011	Westchester	Town of North Castle	MIANUS RIVER
Sandsmill Subdivision	A	7/22/2008	Westchester	n/a	WAMPUS RIVER
Project 50	A	3/25/1997	Westchester	Town of Bedford	TR-KISCO RIVER
Old Farm Lake	A	12/31/1901	Westchester	Town of North Castle	TERCUA BROOK
Munson Pond	A	n/a	Westchester	Town of Mount Pleasant	NANCY HOGAN CREEK
Echo Lake	A	3/14/2008	Westchester	n/a	n/a
VERNAY LAKE	A	n/a	Westchester	Town of Ossining	n/a
C W Hahnel	A	4/17/1972	Westchester	n/a	TR-MIANUS RIVER
Lake In The Ledges	A	4/4/2002	Westchester	Town of North Castle	TR-MAINUS RIVER
Cliffdale Pond	A	4/5/2013	Westchester	Town of Cortlandt	TR-CROTON RIVER
Oscawana Park Pond #1	A	5/7/2013	Westchester	n/a	FURNACE BROOK

Steinhardt Pond	A	12/31/1901	Westchester	n/a	n/a
DUCK POND	A	9/20/2012	Westchester	Town of New Castle	n/a
EDWARD DAM	A	n/a	Westchester	TOWN OF BEDFORD	SHALLOW BROOK
W G Gallowhur	A	4/17/1982	Westchester	n/a	TR-STONE CREEK
Broccy Creek	A	12/31/1901	Westchester	n/a	BROCCY CREEK
Hollowbrook Golf Club Pond #3	A	n/a	Westchester	Town of Cortlandt	HOLLOW BROOK
Gary Lundquist	A	12/31/1901	Westchester	n/a	SHRUB OAK BROOK
Junior Lake	A		Westchester	Town of Yorktown	HALLOCKS MILL BROOK
Halleck's Mill	A	5/22/2013	Westchester	n/a	n/a
Kellogg Pond	A	4/4/1972	Westchester	n/a	TR-STONE HILL RIVER
N Basin	A	1985	Westchester	n/a	n/a
SANCTUARY COUNTY CLUB	A	12/12/2010	Westchester	Town of Yorktown	n/a
Journeys End Lake Dam	A	6/22/2009	Westchester	n/a	n/a
Dream Lake Dam & Dike	A	12/8/1994	Westchester	n/a	TR-NEW CROTON RESERVOIR
Nelson Pond Dam	A	3/21/1972	Westchester	n/a	TR-CROTON RESERVOIR
Khalid Dam	A	9/30/2013	Westchester	n/a	FURNACE BROOK
Primrose Subdivision Dam	A	n/a	Westchester	n/a	ANGEL FLY BROOK
Chelsea At Yorktown Dam	A	N/A	Westchester	n/a	FRESHWATER WETLAND A-12
Rock Garden Lake Dam	A	n/a	Westchester	n/a	TR-CROTON RESERVOIR
Croton Water Supple Dams A&B	A	11/16/1973	Westchester	N/A	TR-CROTON RIVER
Robinhood Lake Dam	A	3/25/1997	Westchester	Town of Pound Ridge	TR-MANUS RIVER

Cohomong Woods	A	3/8/2011	Westchester	Town of North Castle	TR-MIANIAS RIVER
Spruce Street	A	12/31/1901	Westchester	n/a	TR-LAKE MOHEGAN
Twin Lakes Dam	A	3/9/2011	Westchester	Town of Lewisboro	TR-CROTON RIVER
Oakridge Land & Property Corp	A	11/19/2010	Westchester	n/a	TR-SISCOWIT RESERVOIR
Mallard Lake	A	8/10/1999	Westchester	n/a	TR-RIPPONAN RIVER
Dann Farm Subdivision	A	11/19/2010	Westchester	Town of Pound Ridge	n/a
Loop Hole Road	A	3/27/1996	Westchester	n/a	TR-STONE HILL RIVER
Old Bedford Estates	A	10/7/2003	Westchester	Town of Bedford	TR-STONE HILL RIVER
H J Halle	A	4/4/1972	Westchester	n/a	TR-MILL RIVER
C W Hahnel Dam	A	4/17/1972	Westchester		TR-MIANUS RIVER
BYRAM RIDGE	A	n/a	Westchester	Town of North Castle	n/a
Deer Run Dam	A	5/22/2007	Westchester	Town of Lewisboro	SILVERMINE RIVER
Wn Basin	A	12/7/1994	Westchester	Town of Somers	n/a
Frankcrest Pond	A	11/19/2010	Westchester	n/a	TR-PURDY BROOK
Ottaviano's	A	7/22/1982	Westchester	n/a	CROTON RIVER
Kaplan	A	3/21/1972	Westchester	n/a	TR-CROTON RIVER
Dickey Brook R R	A	3/24/1972	Westchester	n/a	TR-DICKEY BROOK
Ws Basin	A	12/7/1994	Westchester	Town of Somers	n/a
Rw Basin	A	12/7/1994	Westchester	Town of Somers	n/a
Kenilworth Subdivision Pond Dam B	A	n/a	Westchester	Town of Somers	PLUM BROOK
Kenilworth Subdivision Pond Dam A	A	n/a	Westchester	Town of Somers	PLUM BROOK
Mangino	A	6/26/2013	Westchester	Town of Yorktown	n/a
Maiden Lane Upper	A	5/3/2013	Westchester	Village of Croton-on-Hudson	n/a
Candlewood	A	4/4/2002	Westchester	n/a	TR-CROTON RIVER
Villa Loretto Detention	A	3/17/2010	Westchester	Town of Cortlandt	n/a

Basin #4					
Jaffe Pond	A	5/22/2007	Westchester	n/a	TR-SILVERMINE RIVER
GIGLIO COURT	A	3/17/2010	Westchester	Village of Croton-on-Hudson	n/a
Hudson National Golf Course Irrigation	A	n/a	Westchester	Town of Cortlandt	n/a
Amawalk Lake North	A	n/a	Westchester	n/a	TR-PLUM BROOK
Somers Manor	A	n/a	Westchester	Town of Somers	n/a
Stone House Farms Lake	A	3/24/1972	Westchester	n/a	TR-CROTON RIVER
Bridle Ridge	A	3/27/1995	Westchester	n/a	n/a
Truesdale Lake	A	6/19/2009	Westchester	Town of Lewisboro	TR-WACCABUC RIVER
BROKAW	A	9/19/2012	Westchester	Town of Pound Ridge	n/a
Spruce Lake	A	5/10/2011	Westchester	Town of North Salem	n/a
Mt Pleasant Pond	A	7/27/2012	Westchester	n/a	TR-BRONX RIVER
<b><u>Class A: 104</u></b>					
<b><u>Class B: 46</u></b>					
<b><u>Class C: 33</u></b>					
<b><u>Total: 183</u></b>					